



Volcanic Ash



Cecilia Miner
NWS Volcanic Ash Program Manager
October 31, 2012



Agenda



- Introduction
- Why Volcanic Ash Advisory Centers
- International Areas of Responsibility
- U.S. VAACs
 - Washington
 - Anchorage
- VAAC Tools



Introduction



- General Volcanic Ash Intro – Cecilia Miner, NOAA/NWS
- Tokyo VAAC – Jun Ryuzaki, Japan Meteorological Agency
- Airline Meteorologist Perspective – Randy Baker, UPS
- Airline Pilot Perspective – Tim Miner, American Airlines



Why Volcanic Ash Advisory Centers?



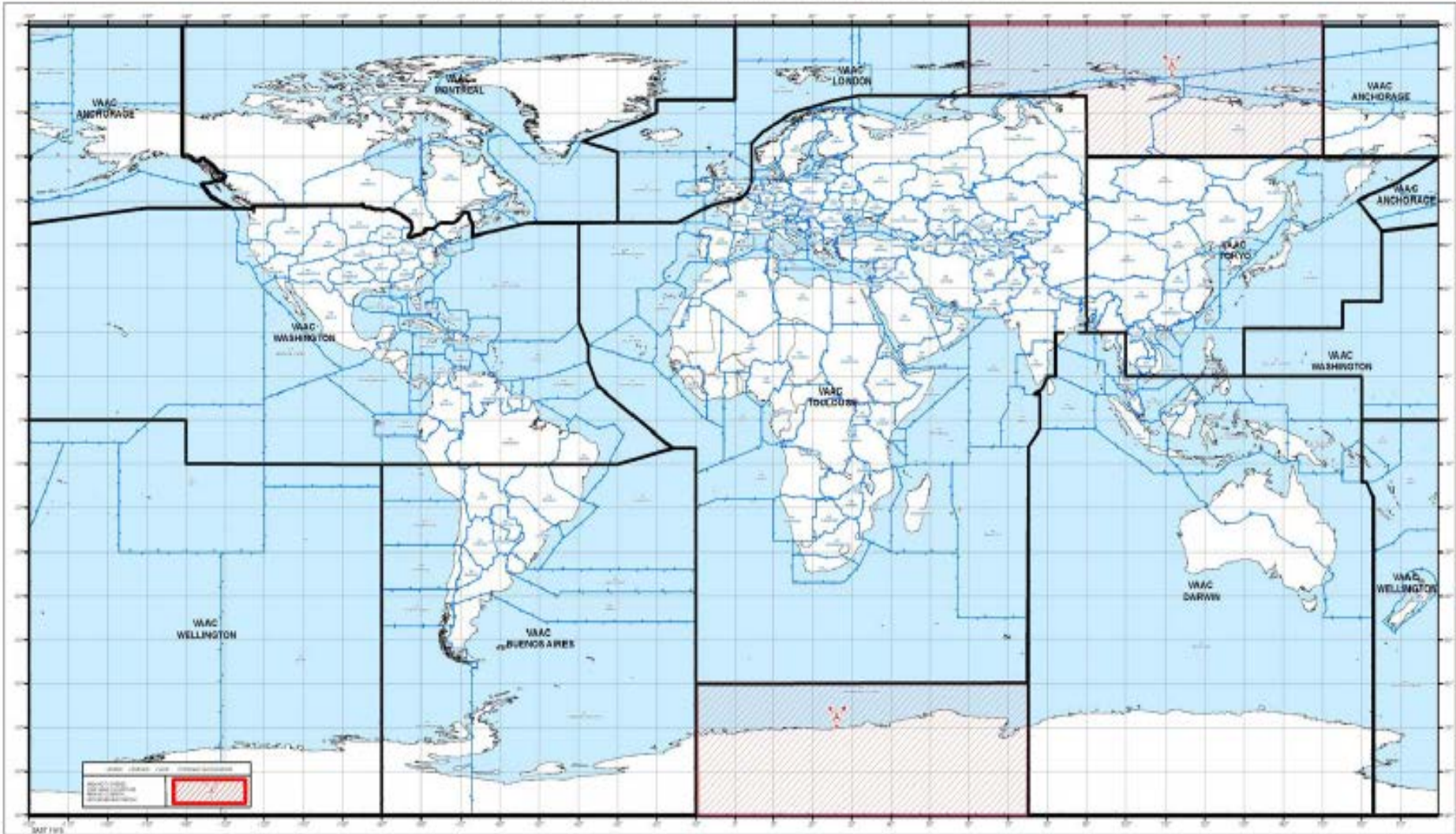
- High-profile encounters with volcanic ash by large commercial aircraft
- Consolidated, dedicated centers of expertise focused on the problem of volcanic ash and aviation
- Structure for coordination and dissemination information on volcanic ash hazard that could potentially span the globe



International Responsibility

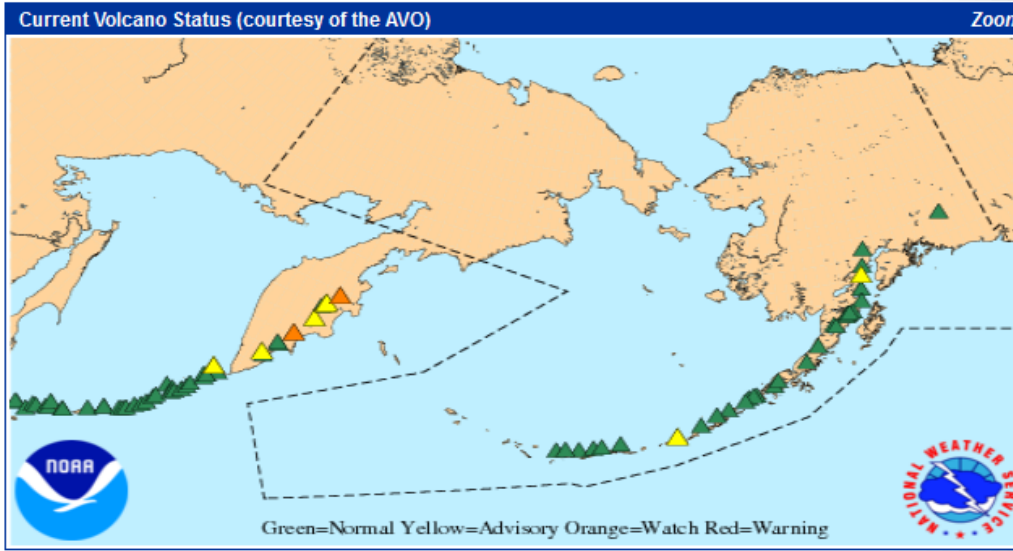


CURRENT STATUS OF ICAO VOLCANIC ASH ADVISORY CENTRES (VAAC) - AREA OF RESPONSIBILITY
SITUATION ACTUELLE DES CENTRES D'AVIS DE CENDRES VOLCANIQUES (VAAC) - ZONES DE RESPONSABILITE
ESTADO ACTUAL DE LOS CENTROS DE AVISOS DE CENIZAS VOLCANICAS (VAAC) DE LA OACI - AREAS DE RESPONSABILIDAD
СУЩЕВНОСТЬ ПРАКТИЧЕСКОГО КОДИФИЦИРОВАННЫХ ЦЕНТРОВ ВААД ПО ВЫСВЯЩЕНОМУ ТЕРИТОРИИ (ВААД) - РАЙОНЫ ОТВЕТСТВЕННОСТИ

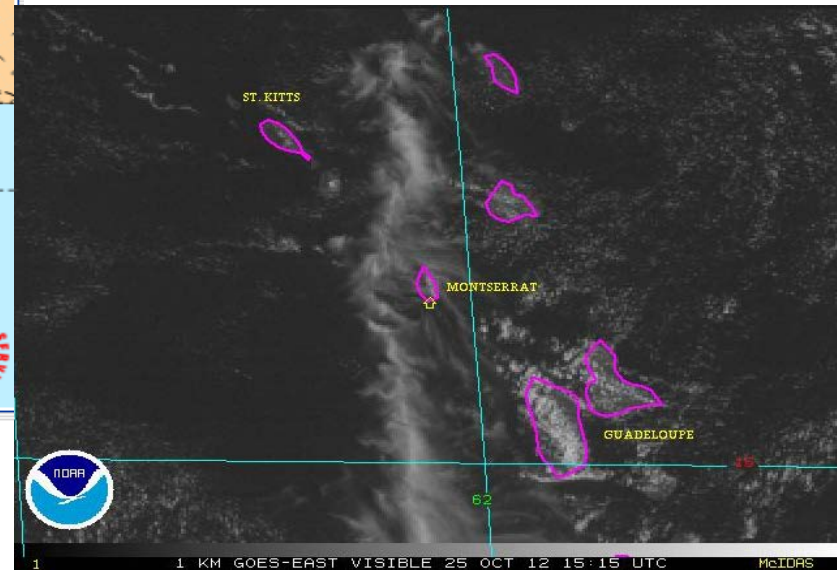




U.S. VAACs



Anchorage



FVXX20 KNES 251347
VA ADVISORY
DTG: 20121025/1347Z

VAAC: WASHINGTON

VOLCANO: SANTA MARIA 1402-03
PSN: N1445 W09133

AREA: GUATEMALA

SUMMIT ELEV: 12375 FT (3772 M)

ADVISORY NR: 2012/066

INFO SOURCE: GOES-13. GFS WINDS. INSIVUMEH.

Washington

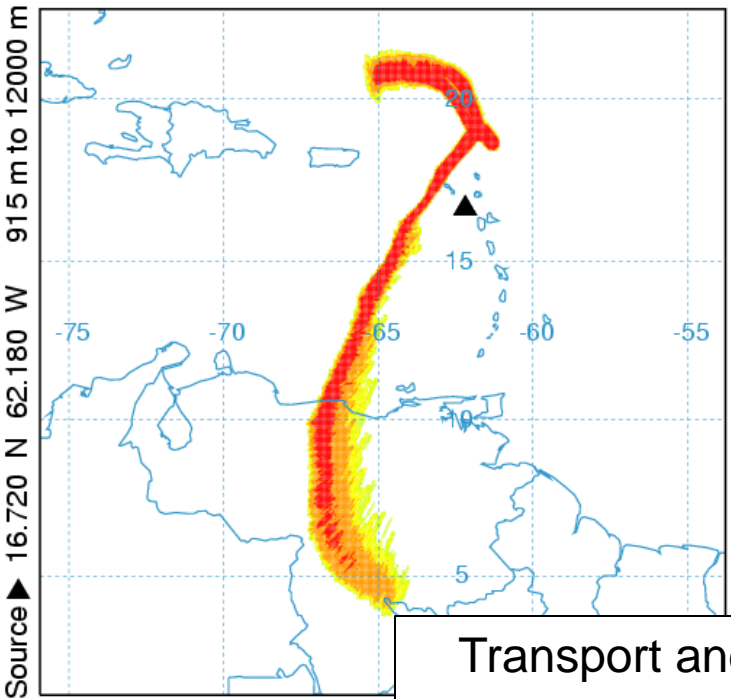
VAAC Tools

Pilot Reports

*UUA/OV ANC240075/TM 2110/FL370/TP
DC10/WX VA/RM VOLCANIC ERUPTION
2008Z MT AUGUSTINE ASH 40S MOV SSE*



USGS
Volcano
Cams



Transport and
Dispersion Models

Satellite
Imagery

