



Safety Risk Management (SRM) Process Overview

Presented by: Everette C. Whitfield

Date: December 18, 2013 v0.2



FAA

Agenda

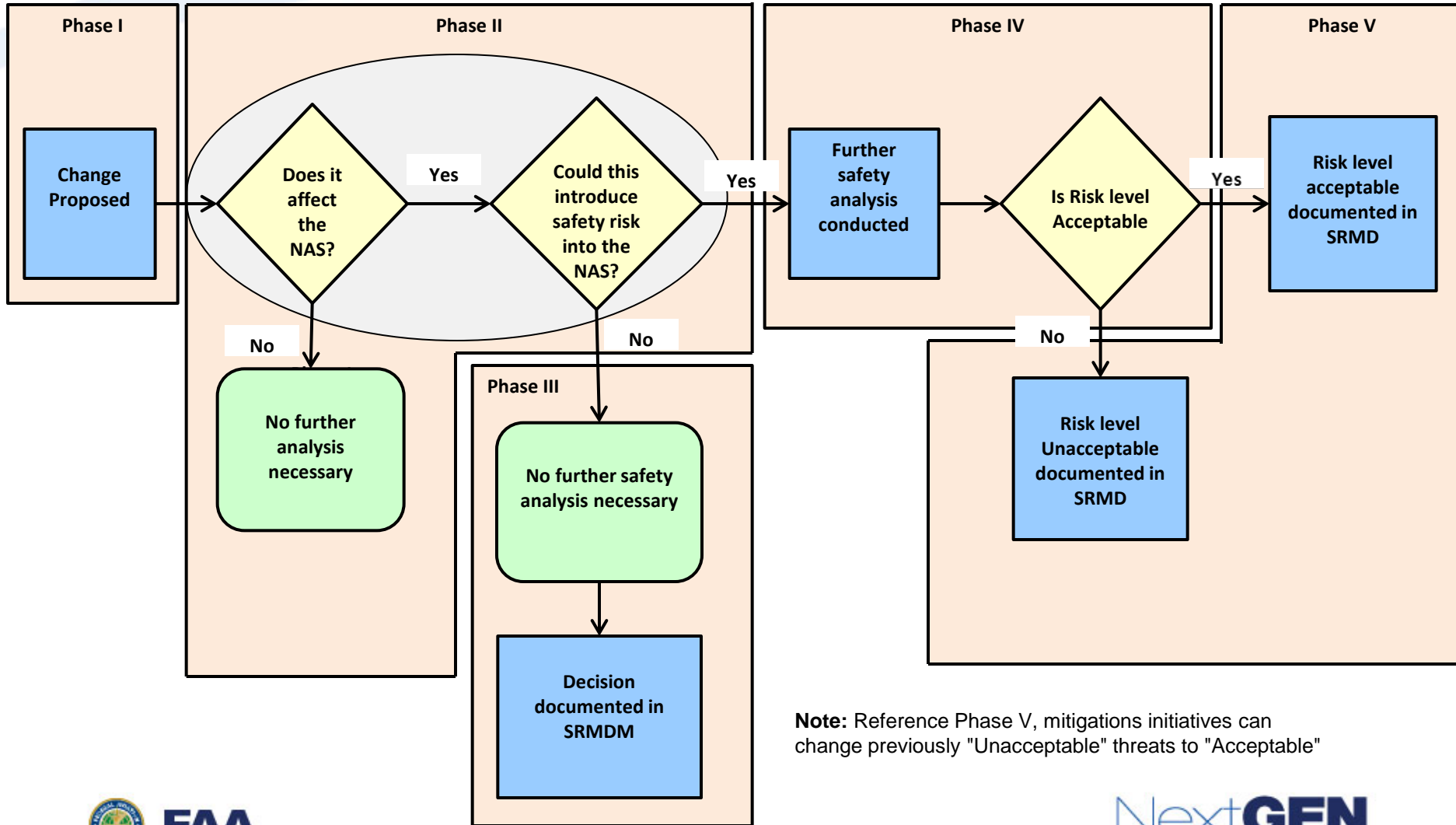
- **Introduction**
- **System Overview**
- **Hazard Analysis Process**
 - ✦ Describe System
 - ✦ Identify Hazards
 - ✦ Analyze Risk
 - ✦ Assess Risk
 - ✦ Treat Risk
- **Close**
 - ✦ Action Items
 - ✦ Next Step

Objective

- **SRM**
 - ✦ A methodology applied to all **NAS changes**
 - ✦ Ensures hazards are identified
 - ✦ Ensures an unacceptable risk is mitigated and accepted prior to making change
- A **NAS change** is any change to or modification of
 - ✦ Airspace
 - ✦ Airports
 - ✦ Aircraft
 - ✦ Pilots
 - ✦ Air navigation facilities;
 - ✦ Air traffic control (ATC) facilities
 - ✦ Communication
 - ✦ Surveillance, navigation and supporting technologies and systems
 - ✦ Operating rules
 - ✦ Regulations, policies, and procedures; and
 - ✦ People who implement, sustain, or operate the system components



AWD Safety Risk Analysis Phases



Note: Reference Phase V, mitigations initiatives can change previously "Unacceptable" threats to "Acceptable"

Mission:
Functions
of system

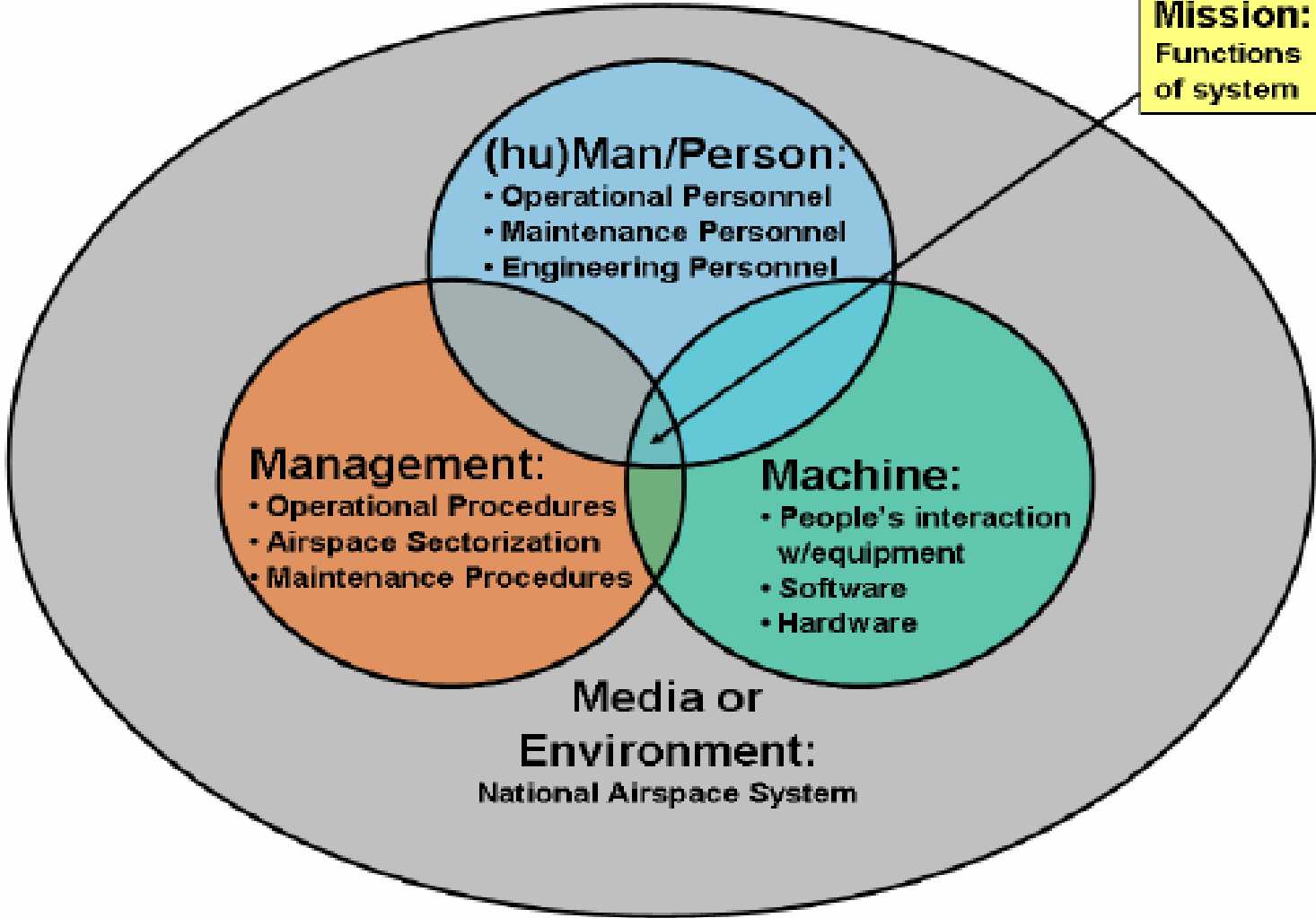


Figure 3.7: 5M Model

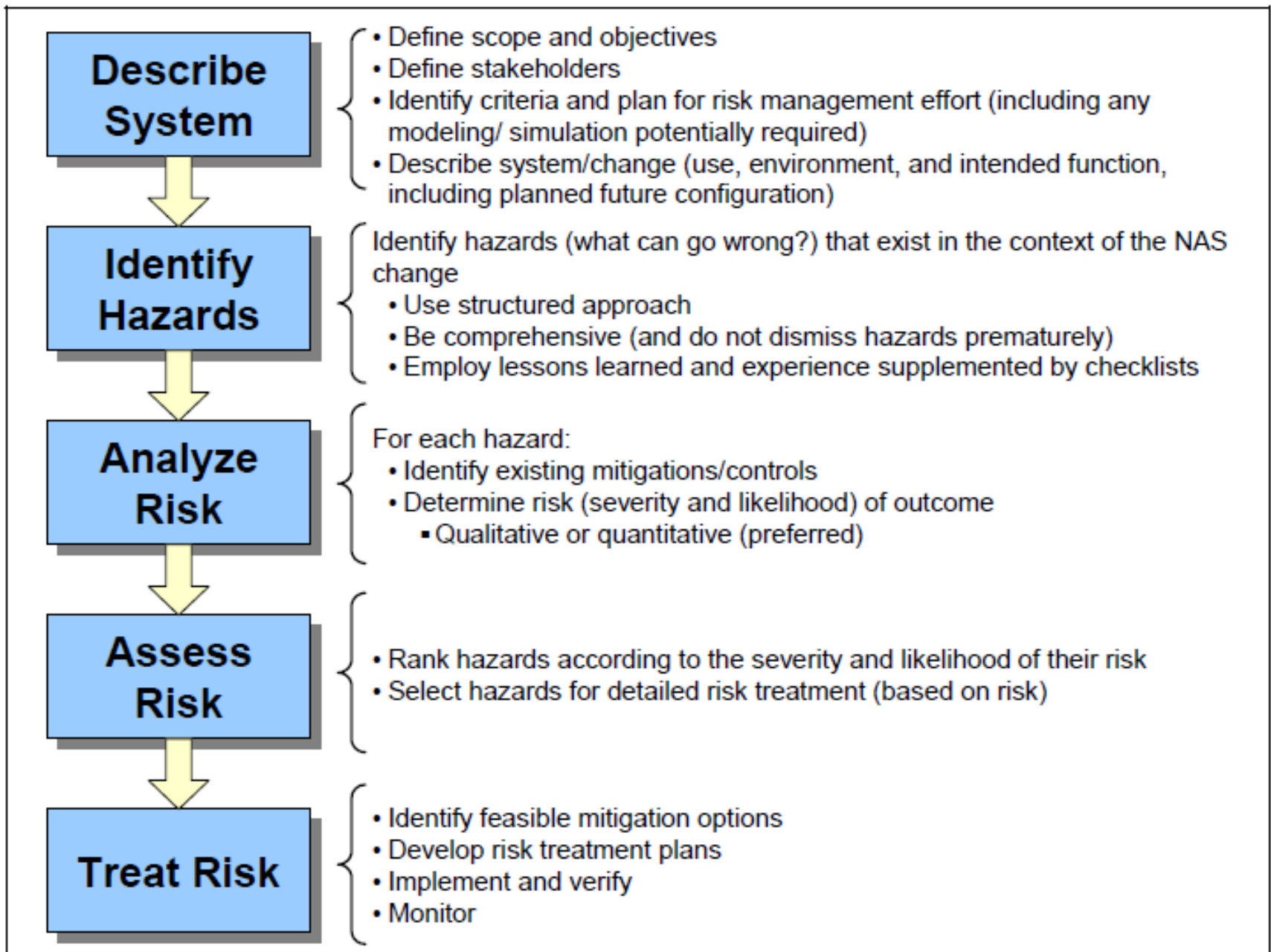


Figure 3.5: SRM Safety Analysis Phases

| Severity \ Likelihood | Minimal 5 | Minor 4 | Major 3 | Hazardous 2 | Catastrophic 1 |
|---------------------------|--------------|-------------|-------------|----------------|-------------------|
| Frequent A | Low Risk | Medium Risk | High Risk | High Risk | High Risk |
| Probable B | Low Risk | Medium Risk | High Risk | High Risk | High Risk |
| Remote C | Low Risk | Low Risk | Medium Risk | High Risk | High Risk |
| Extremely Remote D | Low Risk | Low Risk | Low Risk | Medium Risk | High Risk |
| Extremely Improbable E | Low Risk | Low Risk | Low Risk | Low Risk | Medium Risk * |

| |
|--------------------|
| High Risk |
| Medium Risk |
| Low Risk |

* Unacceptable with Single Point and/or Common Cause Failures

Figure 3.9: Risk Matrix¹²

QUESTIONS?



FAA

Next**GEN**

NextGEN



FAA