
Practical Applications of Probability in Aviation Decision Making

Haig Iskenderian

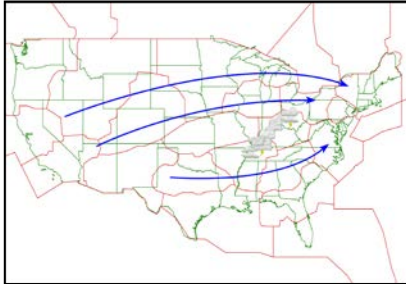
22 October 2014





Portfolio of TFM Decisions

Playbook Reroutes



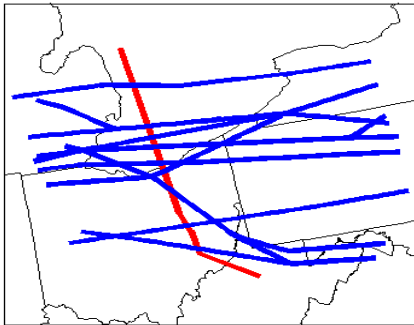
Ground Stops



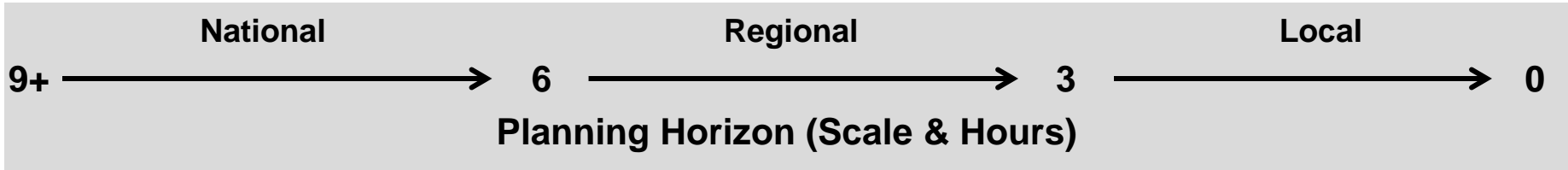
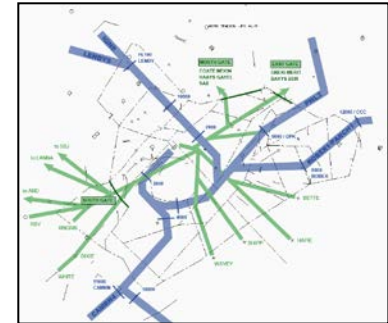
Ground Delay Programs



Airspace Flow Programs



Arrival & Departure Fix Metering



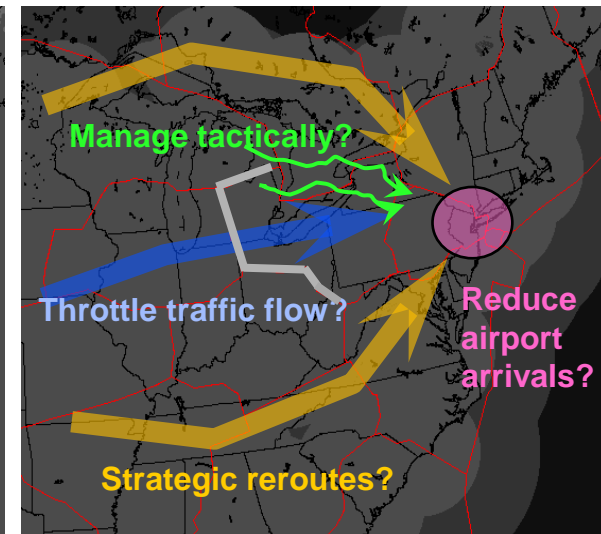
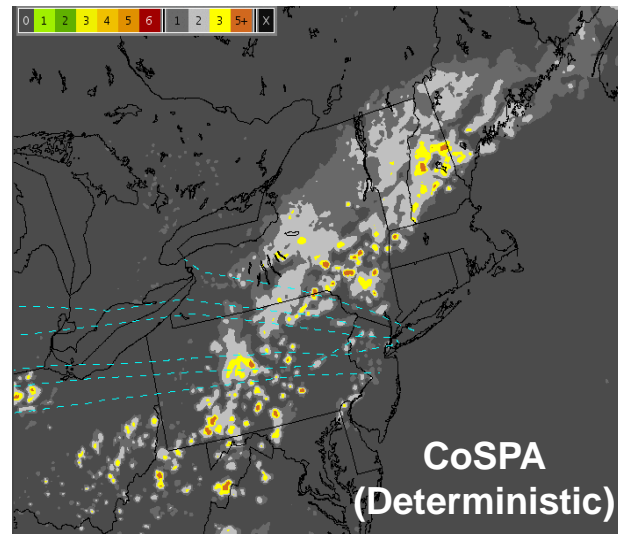
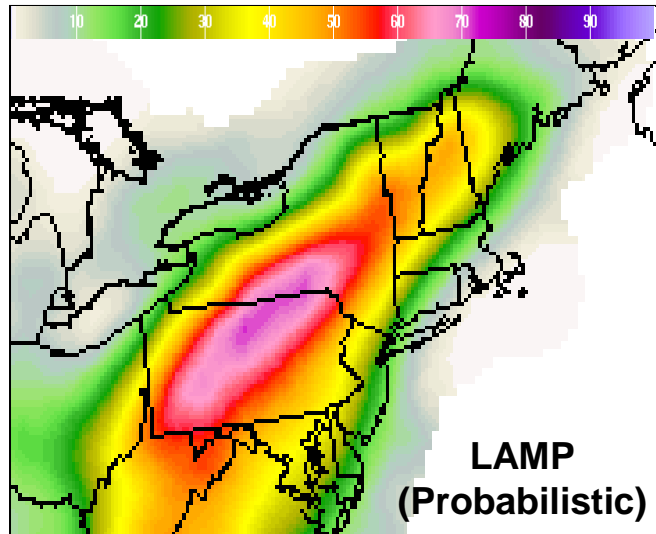


Sample Strategic TFM Decisions

Sample Strategic Forecast Tools



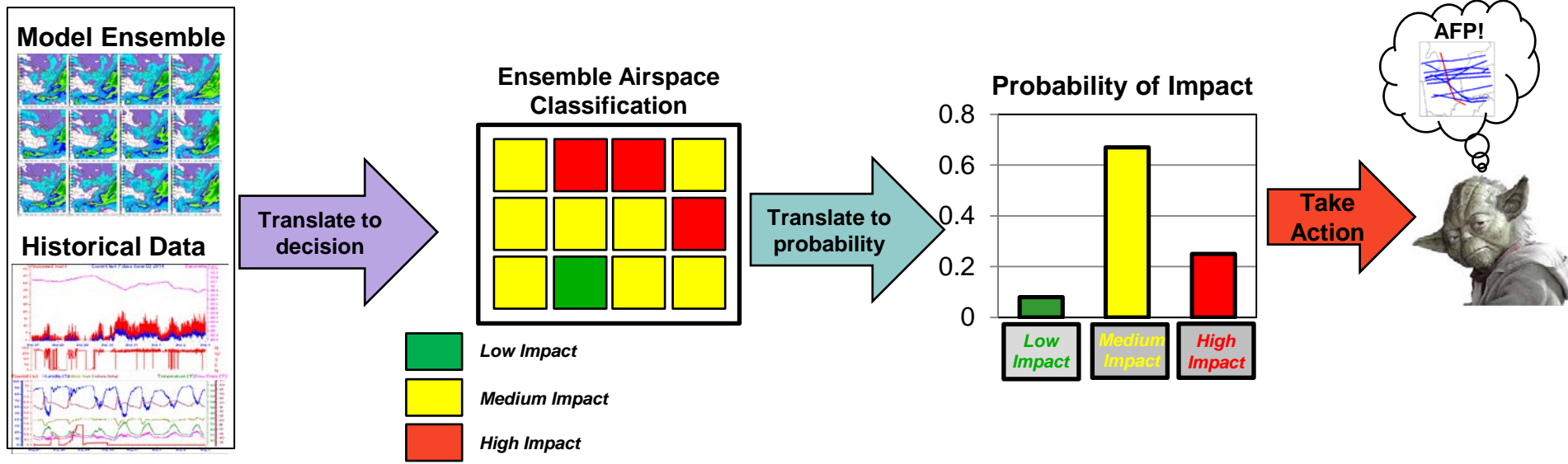
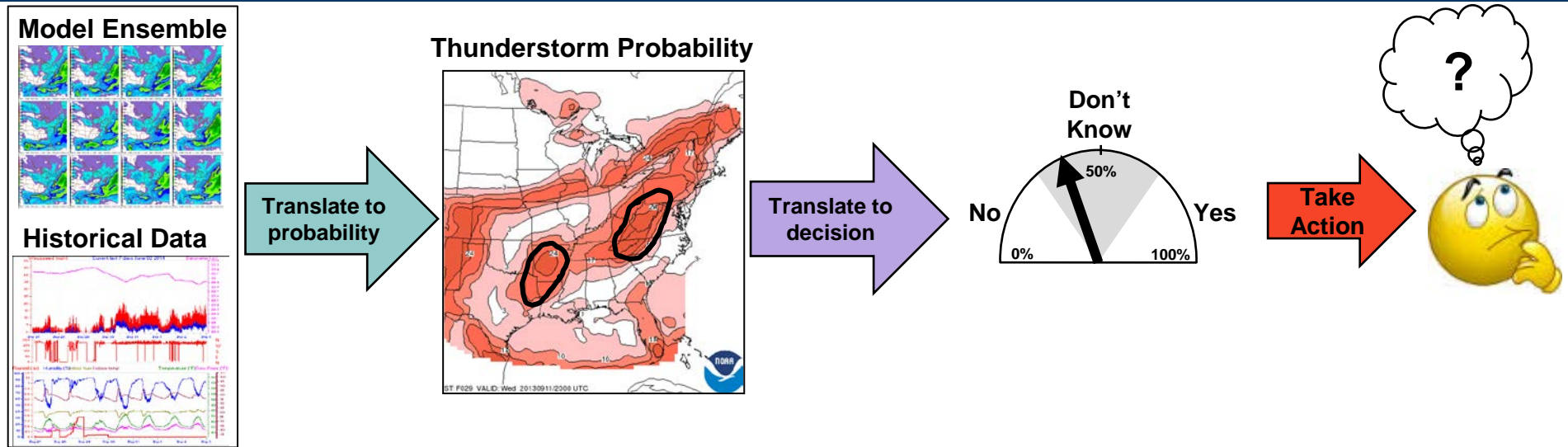
Strategic Decisions



TFM decisions require high-fidelity forecasts of storm structure and characteristics



Approaches to Probabilistic Forecasts for Aviation





Decision-based Uncertainty

Define Resources

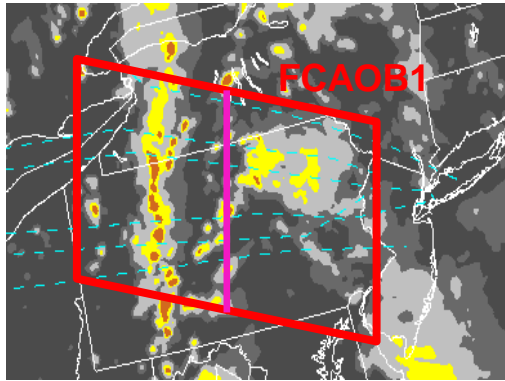


Define Decisions



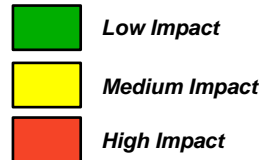
Provide Uncertainty

NY Metro FCA

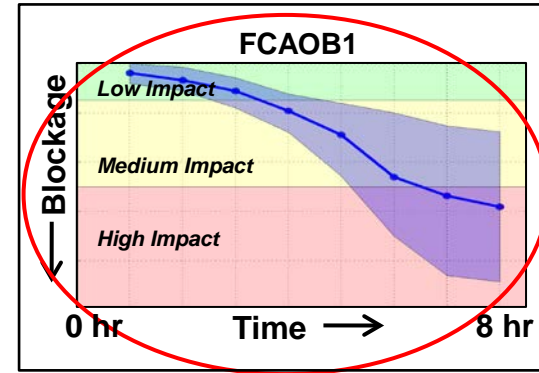


**FCA
Airspace Availability**

	1 hr	2 hr	3 hr	4 hr	5 hr	6 hr	7 hr	8 hr
FCAOB1	Green	Green	Green	Yellow	Yellow	Yellow	Red	Red
FCABW1	Yellow	Green	Green	Green	Yellow	Yellow	Yellow	Yellow
FCAA01	Yellow	Red	Red	Red	Yellow	Green	Green	Green

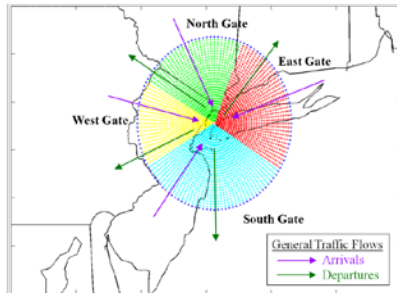


Most Likely Availability & Range



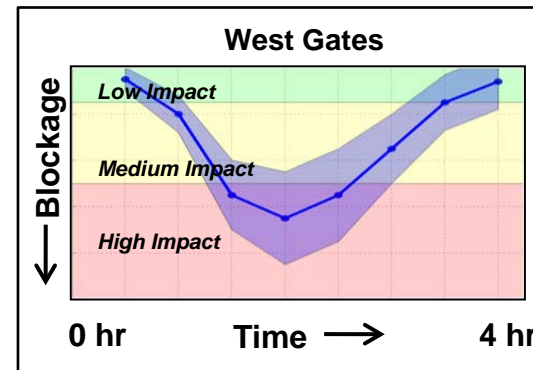
Enroute

NY Metro Gates



**Terminal
Gate Availability**

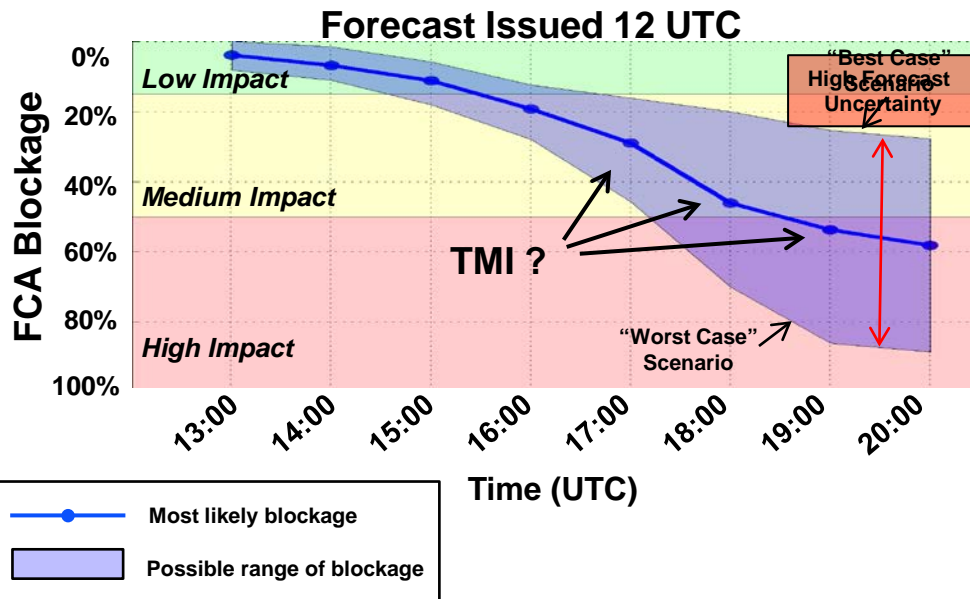
	0.5 hr	1 hr	1.5 hr	2 hr	2.5 hr	3 hr	3.5 hr	4 hr
N	Green	Green	Green	Yellow	Red	Red	Yellow	Yellow
E	Yellow	Green	Green	Green	Green	Green	Yellow	Yellow
S	Yellow	Red	Red	Red	Yellow	Green	Green	Green
W	Green	Yellow	Red	Red	Red	Yellow	Green	Green



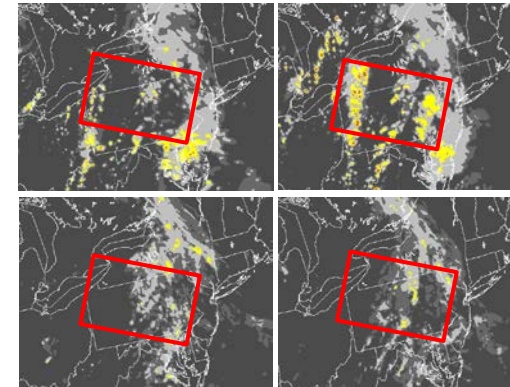
Terminal



FCA Blockage and Uncertainty



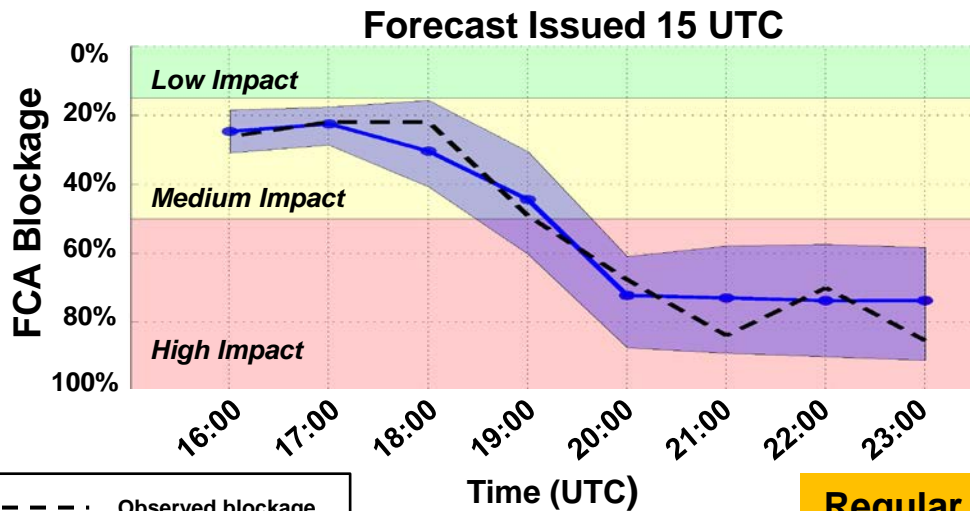
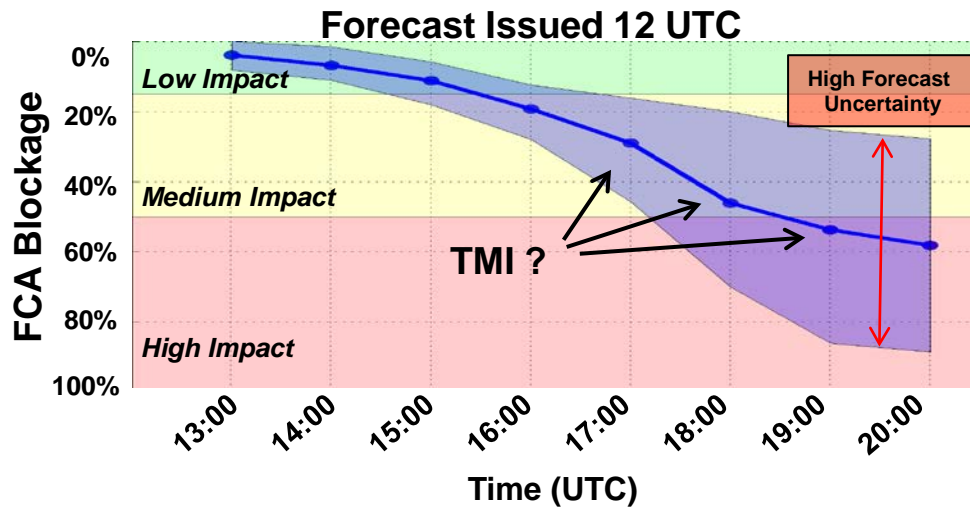
Ensemble of CoSPA Forecasts
Valid 8 Hours in the Future (20Z)



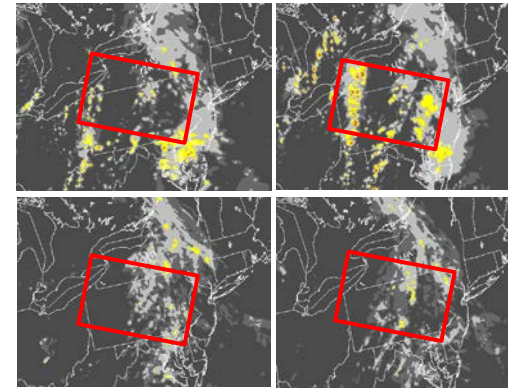
- **Blockage forecast and uncertainty based on:**
 - Model to translate storm intensity and height to blockage
 - Time-lagged ensemble of CoSPA forecasts
 - Historical forecast performance given scale, orientation, intensity of weather
 - Location, issue time, valid time



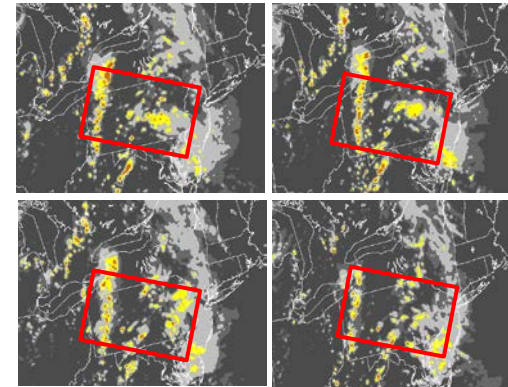
FCA Blockage and Uncertainty



Ensemble of CoSPA Forecasts Valid 8 Hours in the Future (20Z)



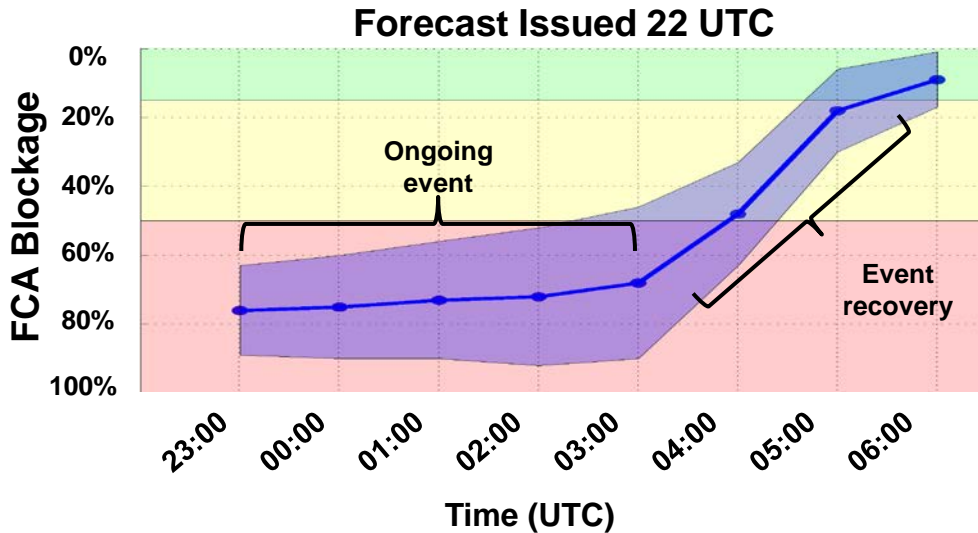
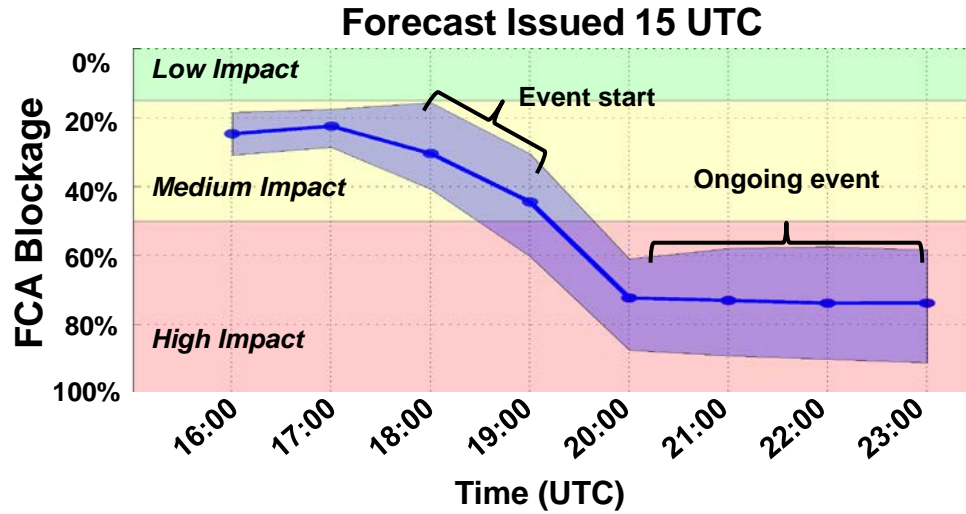
Ensemble of CoSPA Forecasts Valid 5 Hours in the Future (20Z)



Regular forecast updates needed to revisit decisions



Forecast Event Start, Duration and Recovery





Summary

- **Traffic Flow Management decisions encompass a portfolio of time and space scales in the NAS**
- **Probabilistic forecasts cast in TFM decision space could yield considerable operational benefit for strategic planning**
 - **Convert high-fidelity weather forecasts to aviation impact, then provide probability of impact**
 - **Provide event start, severity, and duration**
 - **Focus here on enroute airspace, but similar approach could be used for other airspace and time horizons**
- **Probabilistic forecasts need to update regularly so that TFM decisions can be revisited and revised**



Future Work

- **Map FCA blockage to flow rate**
- **Consider uncertainty for broader portfolio of decisions**
- **Incorporate other models in decision-based uncertainty (SREF, LAMP)**