

Using Ensemble Forecasts to Support NAS Strategic Planning

Alex Tien, Christine Taylor, Craig Wanke

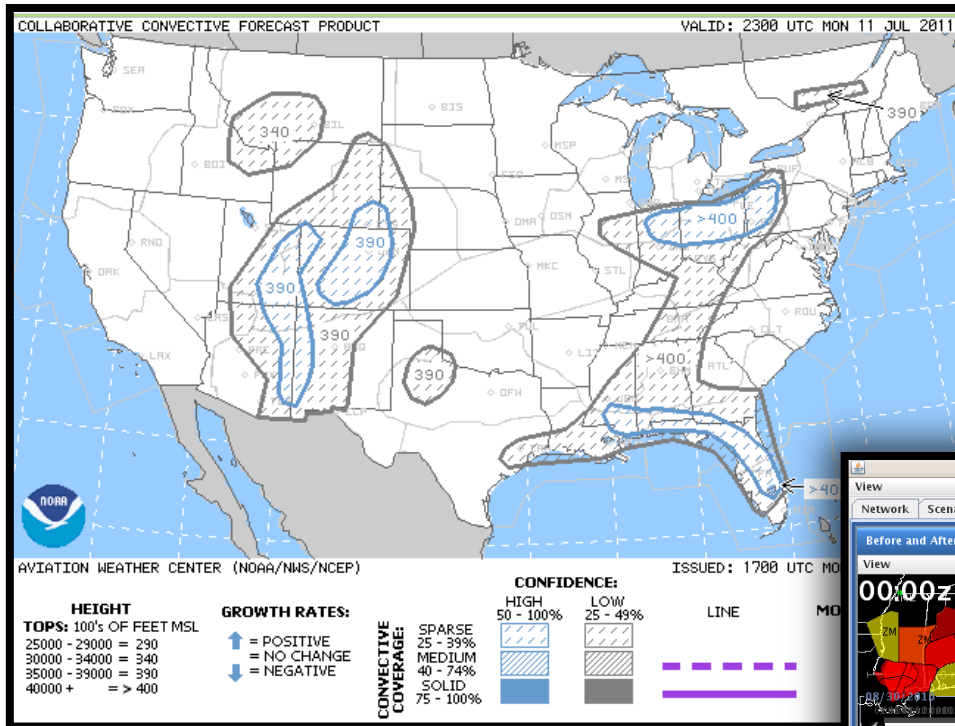
Friends and Partners in Aviation Weather Forum

NBAA Business Aviation Convention & Exhibition 2014

Orlando, FL

October 22, 2014

Strategic Planning and Flow Contingency Management (FCM)



Picture Source: NOAA AWC

NAS strategic planning aims to develop a mitigation plan for severe weather event hours in advance.

Flow Contingency Management (FCM) is developed to provide quantitative assessment of weather impact.

FCM modeling components:

- Translate forecast into capacity reduction
- Simulate weather-traffic interaction
- Plan for delay mitigation strategies

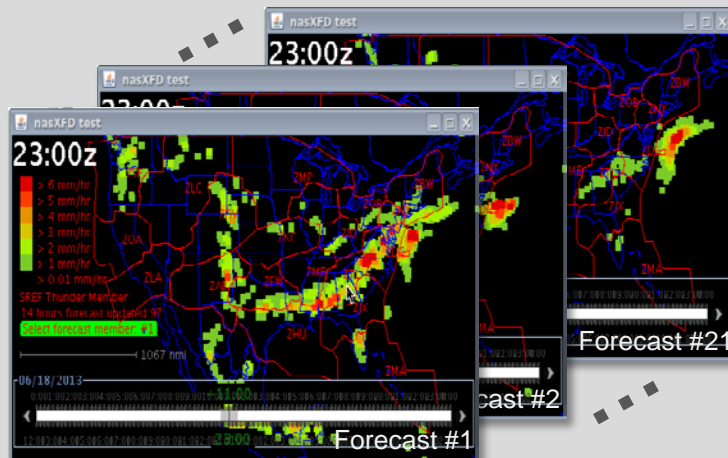
Ensemble forecast can provide a range of possible scenarios for mitigation planning.

TMI	Start	End	Action
ReRoute	19:00	04:00	Via: ATL Avoid: ZT
ATL_G...	19:00	04:00	Airport: MIT Rate: 90 Enhanced ReRoute
ATL_AFP	19:00	01:00	Sectors: Playbook Rate: 6 /hour

Picture Source: MITRE

Analyze Multiple Weather-Impact Scenarios

21 Weather Forecasts from Short Range Ensemble Forecast (SREF)



Picture Source: MITRE

Scenario Analysis Methodology

Generate Weather-Impact Scenarios

- Translate weather forecast into NAS capacity loss
- Simulate weather-traffic interaction in FCM

Evaluate Scenarios with Impact Metrics

- Collect sector delays, key airport delays
- Construct a quantitative representation of scenarios

Apply a Clustering Algorithm

Identify Representative Scenarios

Traffic Management Initiatives

Plan 1

AFP on A05, GDPs on NY Airports

Plan 2

GDPs on NY Airports

Plan 3

GDP on ORD

Plan 4

Do Nothing

Representative Scenarios

Rep. Scenario 1

High impact over ZOB and ZAU

Rep. Scenario 2

High impact on NY terminal airspace

Rep. Scenario 3

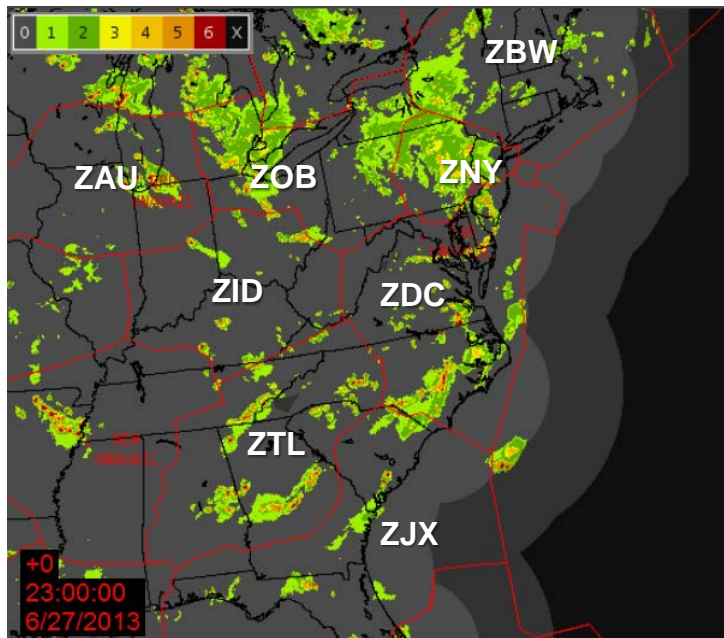
Medium impact on ORD arrivals

Rep. Scenario 4

Low impact

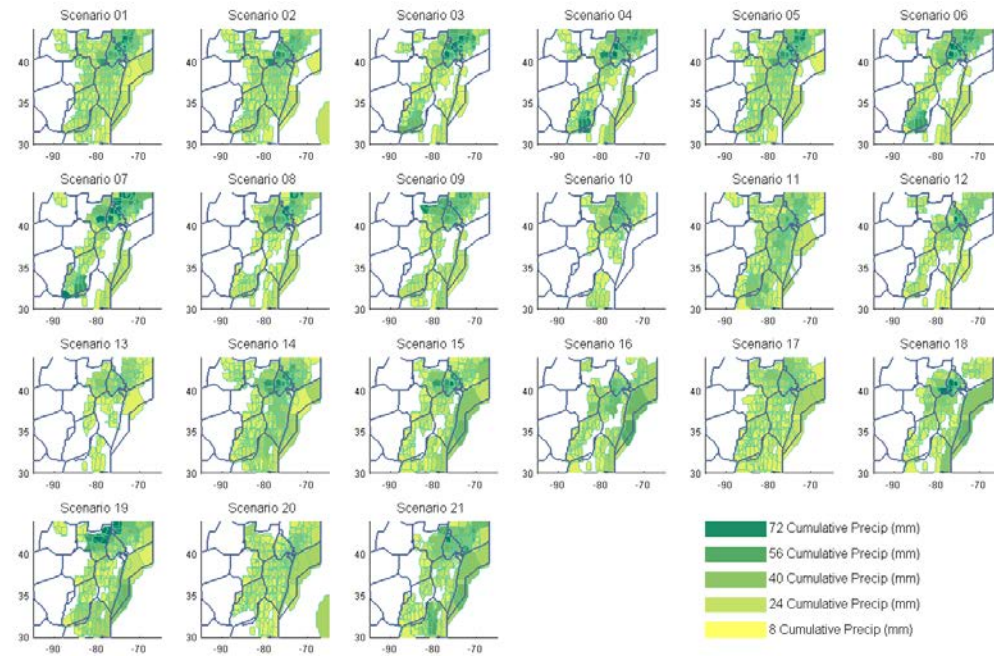
June 27, 2013

Observed Weather (CIWS VIL3+ Coverage)



Picture Source: MITRE

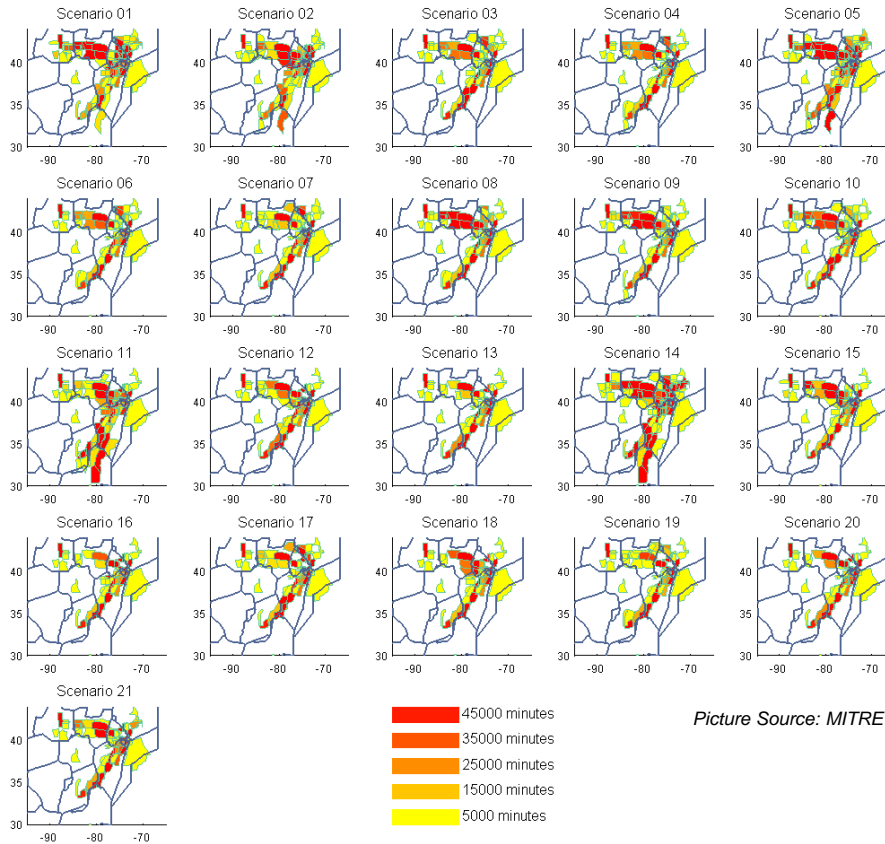
SREF Forecast at 0900Z (21 Scenarios of Hourly Precipitation)



Hourly precipitation aggregated over one day for illustration.

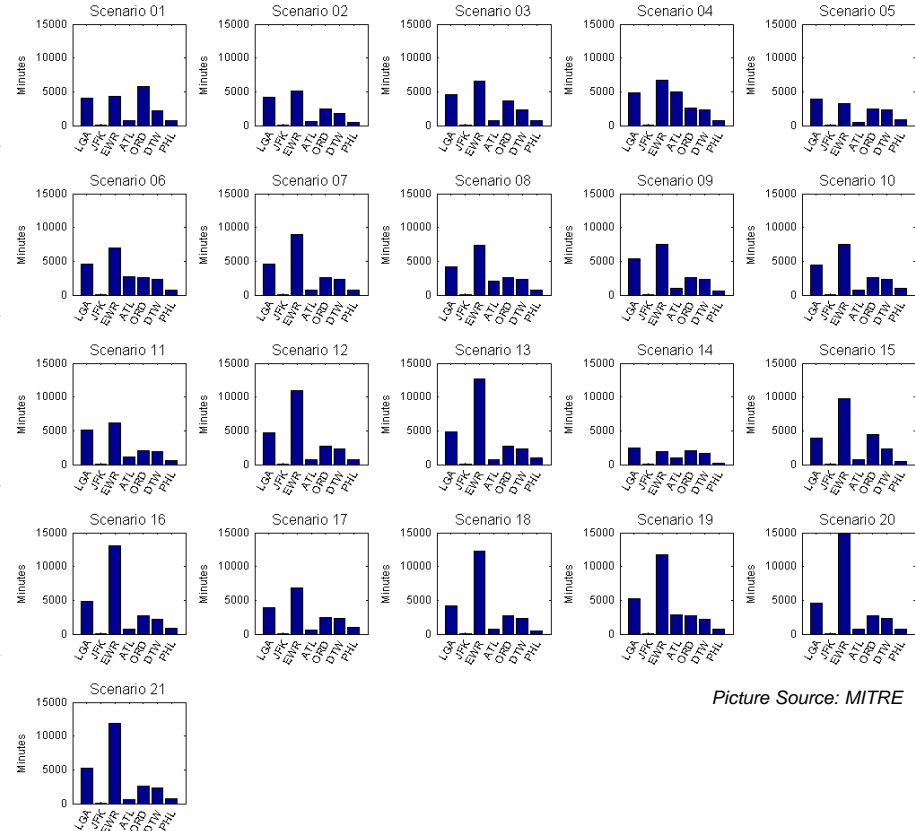
Generate Weather-Impact Scenarios via FCM Simulation

Sector Delays of 21 Scenarios



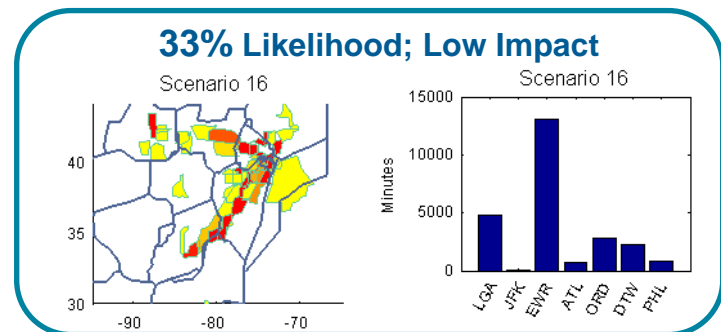
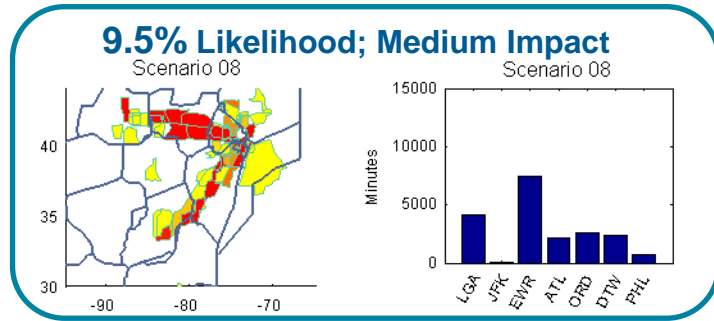
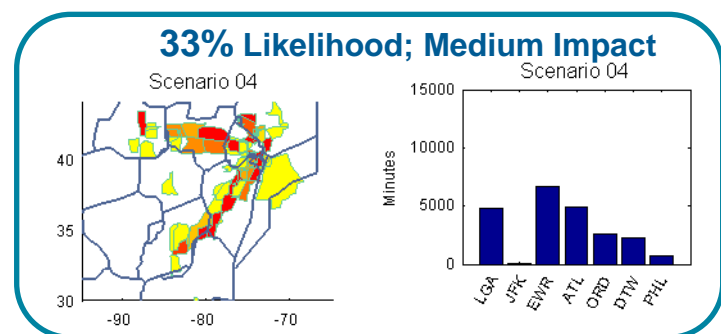
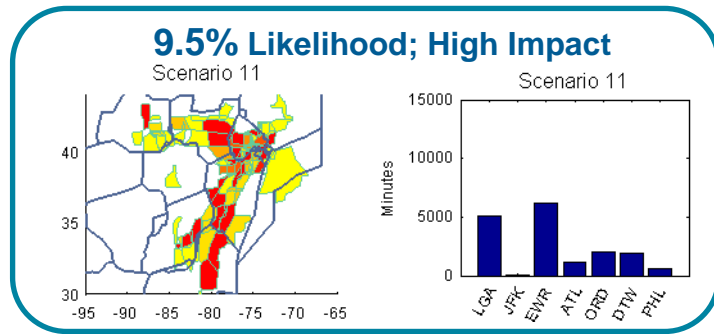
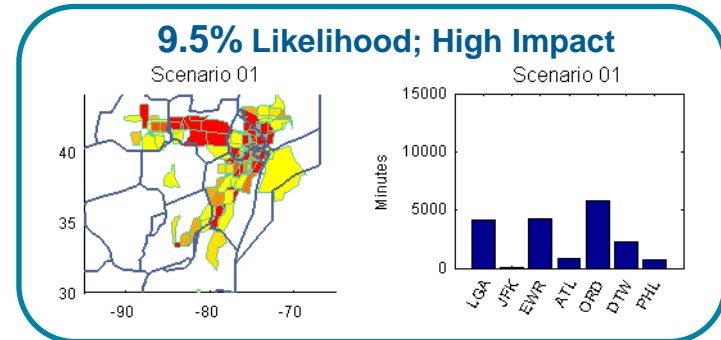
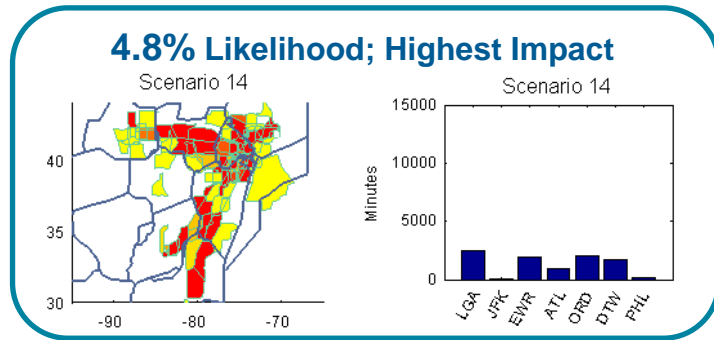
Picture Source: MITRE

Airport Delays of 21 Scenarios (LGA, JFK, EWR, ATL, ORD, DTW, and PHL)



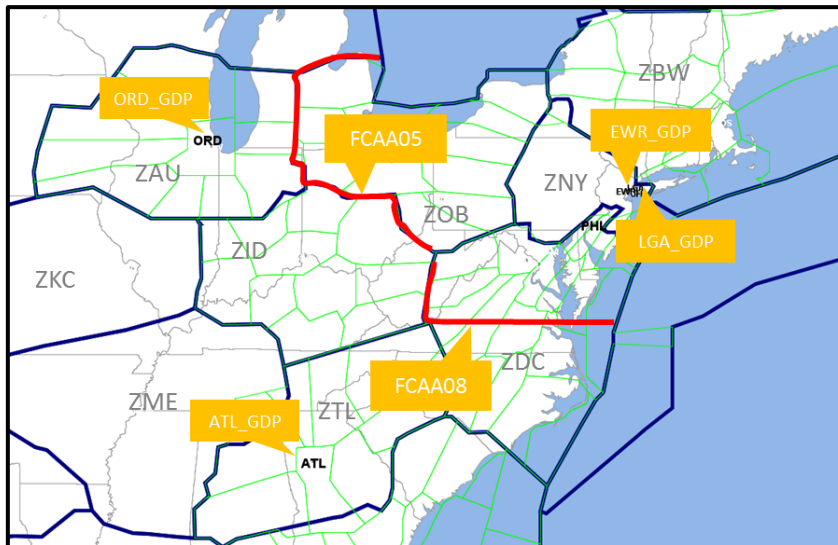
Picture Source: MITRE

Identify Representative Weather-Impact Scenarios



Design Traffic Management Initiatives

■ “Optimize” TMI plans for Representative Scenarios



Picture Source: MITRE

Optimization capability was developed to efficiently search the combination of TMI parameters.

*The objective function is set as ground delay + 2 * sector delays.*

TMI Type		Start Time (UTC)	Duration (Hr)	Hourly Rate
GDP	EWR	{16, 17, 18, 19, 20, 21, 22}	{8, 9, 10, 11, 12, 13, 14}	{20, 25, 30, 35, 40}
GDP	LGA	{16, 17, 18, 19, 20, 21, 22}	{8, 9, 10, 11, 12, 13, 14}	{15,20,25, 30, 35}
GDP	ORD	{20, 21, 22, 23, 00, 01}	{2, 3, 4, 5, 6, 7, 8}	{70, 75, 80, 85, 90, 95, 100}
GDP	ATL	{18, 19, 20, 21, 22}	{3, 4, 5, 6, 7, 8}	{70, 75, 80, 85, 90, 95, 100}
AFP	FCAA05	{18, 20, 22, 00}	{6, 8, 10, 12, 14}	{50,60,70, 80, 90, 100}
AFP	FCAA08	{18, 20, 22, 00}	{6, 8, 10, 12, 14}	{70, 80, 90, 100, 110, 120}

Compare TMI Plans

	TMI Parameters For Each Optimized Plan					
	Plan for Scenario 14* (Highest Impact)	Plan for Scenario 01 (High Impact)	Plan for Scenario 11 (High Impact)	Plan for Scenario 08 (Medium Impact)	Plan for Scenario 04 (Medium Impact)	Plan for Scenario 16 (Low Impact)
EWR GDP	S**: 22 D: 10 R: 25	S: 21 D: 11 R: 30	S: 22 D: 9 R: 40	S: 22 D: 10 R: 30	S: 22 D: 10 R: 35	S: 21 D: 10 R: 40
LGA GDP	S: 19 D: 13 R: 20	S:22 D: 10 R: 35	S: 22 D: 9 R: 30	-	-	-
ORD GDP	S: 23 D: 4 R: 80	S: 23 D: 3 R: 75	S: 00 D: 4 R: 95	S: 01 D: 4 R: 40	-	-
ATL GDP	-.***	-	-	-	S: 22 D: 4 R: 90	-
AFP 05	S: 18 D: 12 R: 80	-	-	-	-	-
AFP 08	S: 00 D: 8 R: 120	S: 00 D: 8 R: 110	S: 22 D: 10 R: 120	-	-	S: 00 D: 8 R: 100

* Plan 01 is a shorthand note for the plan optimized for Scenario 01, and so forth for other plans.

** **S** for start hour in Zulu; **D** for duration in hours; **R** for hourly rate.

*** Empty cell in the table means that the TMI is not part of the optimized strategy.

Evaluate Clustering Results and TMI Plans

- The greatest cost reduction percentages correlate with the plan optimized for the corresponding scenario.

Representative Scenarios	Likelihood of Occurrence	Baseline System Cost Function Value (in Min.)	Cost Reduction (%)					
			Under Plan 14	Under Plan 01	Under Plan 11	Under Plan 08	Under Plan 04	Under Plan 16
Scenario 14 (Highest Impact)	4.8%	2,387,294	-20.38%	-16.48%	-13.69%	-10.49%	-9.16%	-7.66%
Scenario 01 (High Impact)	9.5%	1,547,095	-18.80%	-24.77%	-19.38%	-19.25%	-14.86%	-11.44%
Scenario 11 (High Impact)	9.5%	1,346,795	-12.30%	-17.99%	-20.50%	-12.28%	-12.08%	-13.32%
Scenario 08 (Med. Impact)	9.5%	1,079,934	-10.22%	-22.22%	-22.09%	-22.89%	-22.06%	-20.46%
Scenario 04 (Med. Impact)	33.3%	942,789	4.98%	-9.03%	-8.97%	-10.91%	-11.55%	-11.09%
Scenario 16 (Low Impact)	33.3%	839,426	9.53%	-6.07%	-7.39%	-8.37%	-8.89%	-10.94%

Concluding Remarks

- **SREF provides a range of possible weather futures for supporting NAS strategic planning.**
- **Methodology for analyzing multiple weather-impact scenarios was proposed.**
 - Evaluate impact → identify representative scenarios → design delay mitigation plans.
- **The performance of the clustering results was examined with the TMI plans designed specifically for the representative scenarios.**
 - Representative scenarios were better mitigated by the TMI plans optimized for them.
- **Next steps:**
 - Explore metrics reflecting stakeholder concerns.
 - More weather days can be analyzed to fine-tune model parameters.
 - Develop methodology for deriving a current decision point plan.

Publications

- Tien, S-L, Taylor, C., and Wanke, C., “Representative Weather-Impact Scenarios for Strategic Traffic Flow Planning,” *AIAA Aircraft Technology, Integration, and Operations Conference*, Atlanta, GA, 16-19 June 2014.
- Tien, S-L, Taylor, C., and Wanke, C., “Identifying Representative Weather-Impact Scenarios for Flow Contingency Management,” *AIAA Aircraft Technology, Integration, and Operations Conference*, Los Angeles, CA, 12-14 August 2013.
- Taylor, C., Masek, T., and Wanke, C., “Designing Strategic Planning Strategies using Multi-Objective Genetic Algorithms,” *AIAA Aviation Technology, Integration, and Operations Conference*, June 2014.
- Taylor, C., Wanke, C., Wan, Y., Roy, S., “A Decision Support Tool for Flow Contingency Management”, *AIAA Guidance, Navigation, and Control Conference*, Minneapolis, MN, August, 2012.

Contact: Alex Tien (sltien@mitre.org)

Thank You!

NOTICE

This work was produced for the U.S. Government under Contract DTFAWA-10-C-00080 and is subject to Federal Aviation Administration Acquisition Management System Clause 3.5-13, Rights In Data-General, Alt. III and Alt. IV (Oct. 1996).

The contents of this document reflect the views of the author and The MITRE Corporation and do not necessarily reflect the views of the FAA or the DOT. Neither the Federal Aviation Administration nor the Department of Transportation makes any warranty or guarantee, expressed or implied, concerning the content or accuracy of these views.

© 2014 The MITRE Corporation. All Rights Reserved.