

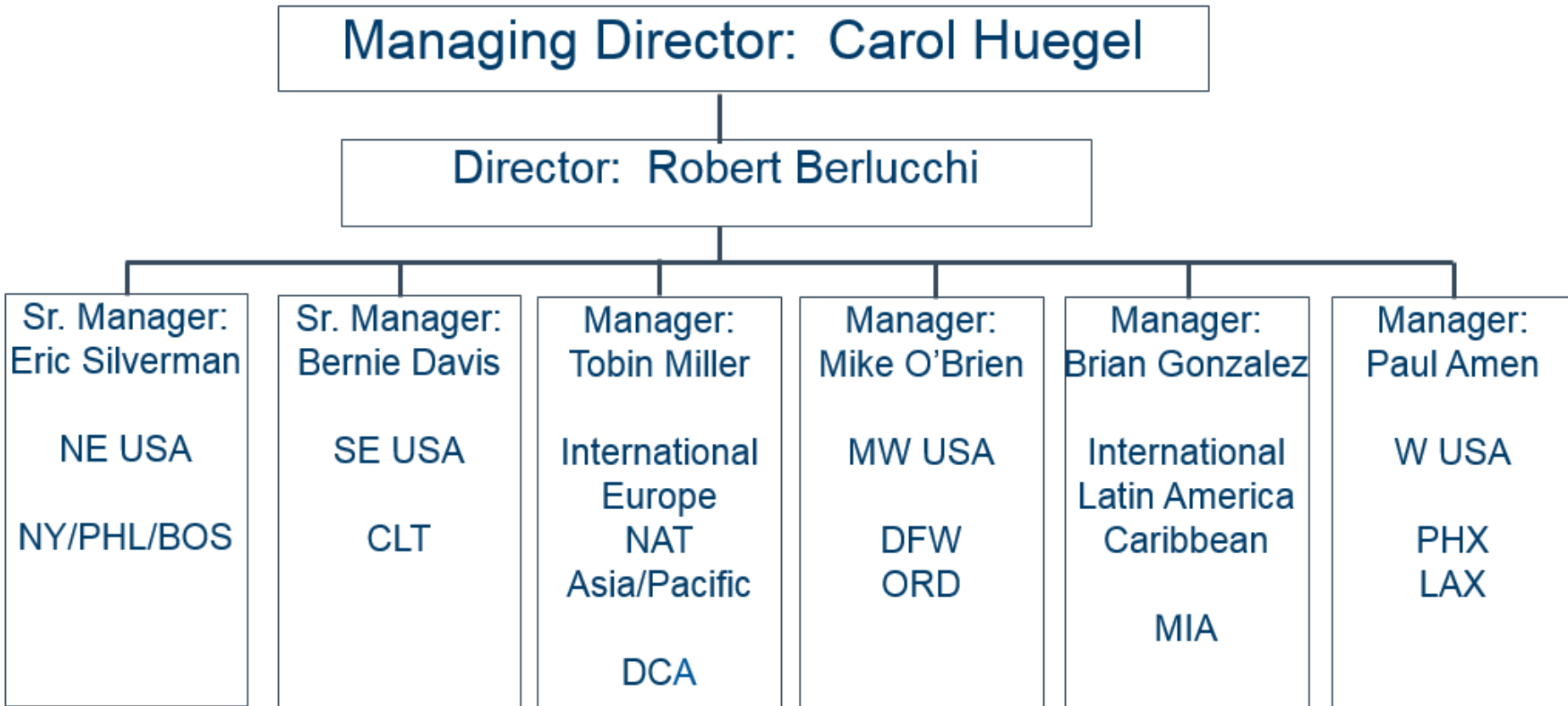


Operational Forecast Challenges-NE Region

Eric M. Silverman-Air Traffic Operations
Manager



The AAL Air Traffic Management and Airfield Operations (ATM&AO) Team

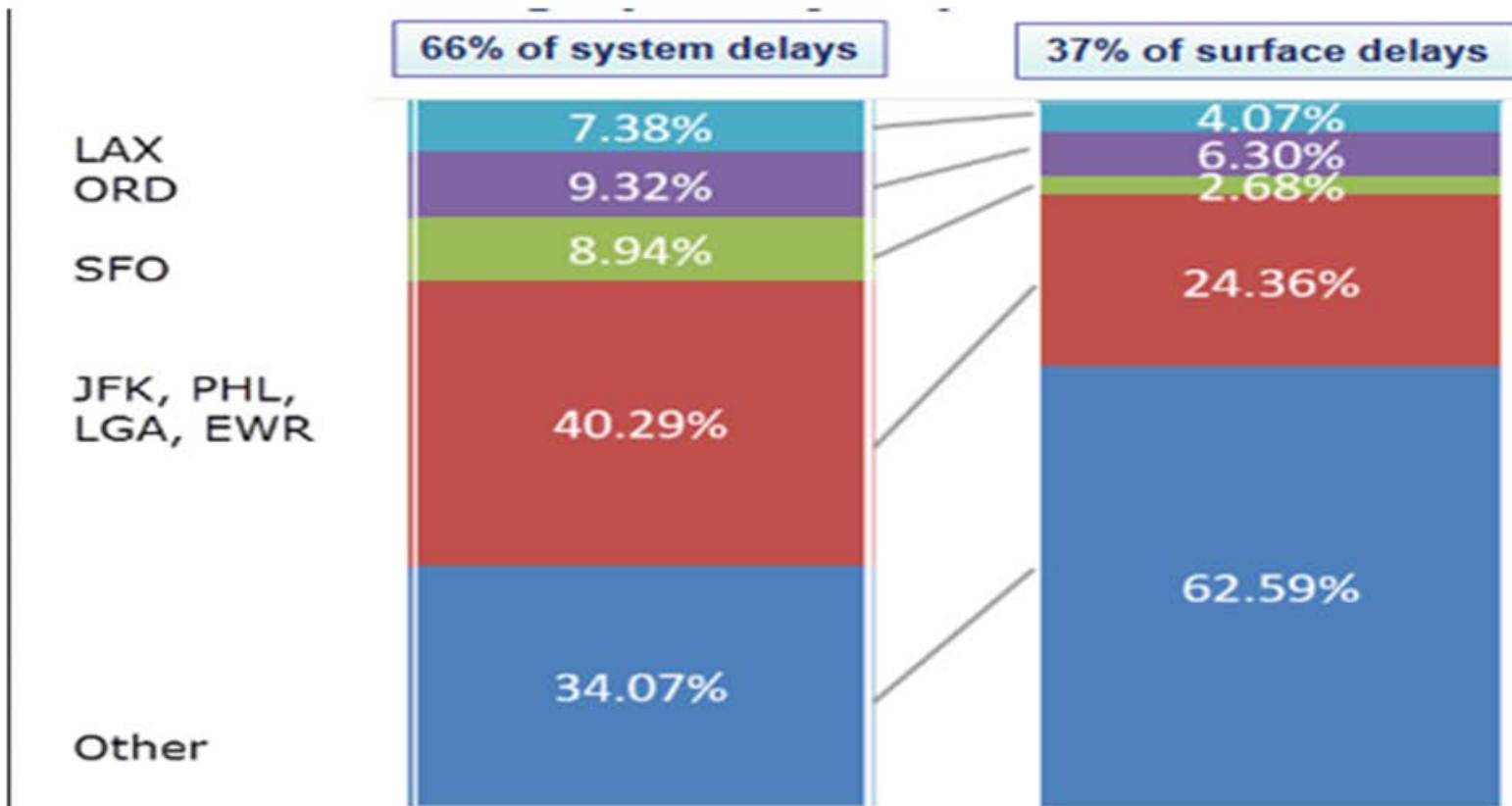


The NE Airspace/Congestion Problem:

- I-95 Corridor Airports-The Challenges: (DC Through BOS)
 - High demand/high density airports, clustered together.
 - Airports competing with the same airspace. Dedicated departure/arrival fixes (SWAP/MIT).
 - Runway layouts at airports do not lead to the most efficient operations (Closely Spaced-Impacts During IFR: Dependency Runway Configurations).

NATIONAL PROGRAMS										
PROGRAM NAME	START	END	SCOPE	REASON	AVG	AAR	PR	ADVZY	DA	
BOS	1700	0059	ALL + CZY	WEATHER / LOW CEILINGS	26	34	34	100	DA	
CYYZ	1500	0659	CANADA + ZOB2 (-ZLC)	RWY CONSTRUCTION	159	32	32	081	-	
DCA	1400	0059	ALL + CZY	WEATHER / LOW CEILINGS	27	26	26	094	DA	
EWR	1500	0459	ALL + CZY	WEATHER / WIND	113	32	32	058	DA	
JFK	1500	0459	ALL + CZY	WEATHER / WIND	179	28	28	071	DA	
LGA	1133	0459	1425 MILES + CZY	WEATHER / WIND	145	28	28	054	DA	
PHL	1800	0059	ALL + CZY	WEATHER / LOW CEILINGS	59	32	32	099	DA	
TEB	1400	2259	ALL + CZY	WEATHER / WIND	157	8	8	073	DA	

The Challenges OF THE NE:

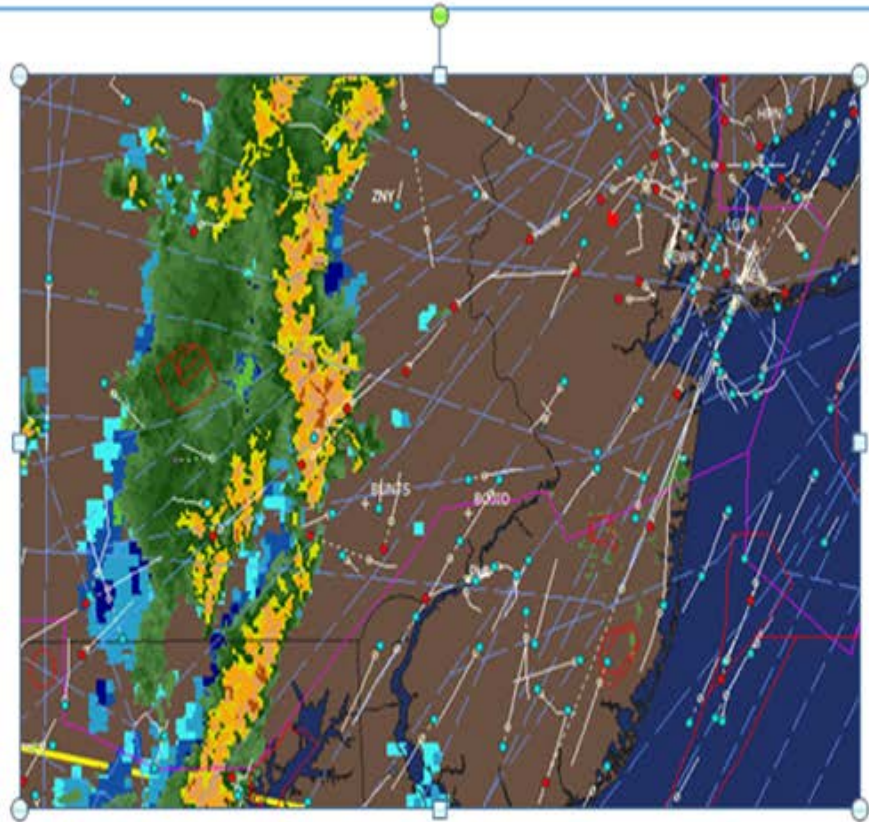


Source: OPSNET Delays Standard Report, ASPM77 2015

The Swap Problem



- The airspace structure in the Northeast is the most dense in the world. PHL sits between the New York Metro and the DC Metos.
- Airways are “one way” in the Northeast, with most arrival routes dedicated to specific traffic flows. Initial departure routes are shared in New York. PHL initial departure routes are dedicated.



- When weather causes arrival traffic to deviate off route departure routes are immediately impacted and often closed as a result.

I-95 Corridor Rain/Snow Dynamic-DC/PHL/NY:

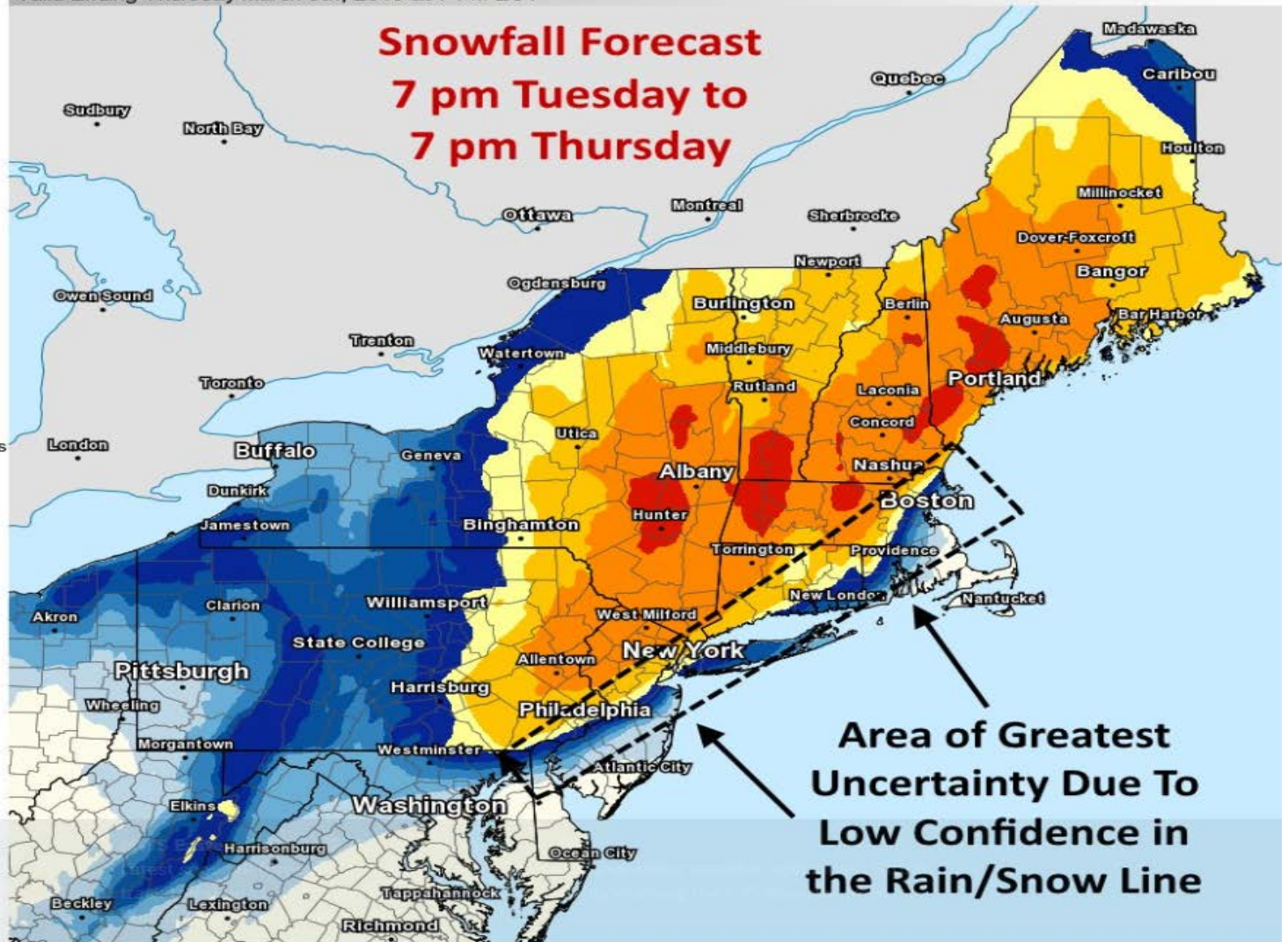
Forecast Snowfall



Valid Ending Thursday March 8th, 2018 at 7 PM EST

**Snowfall Forecast
7 pm Tuesday to
7 pm Thursday**

- Less than an inch
- 1 to 2 inches
- 2 to 3 inches
- 3 to 4 inches
- 4 to 6 inches
- 6 to 8 inches
- 8 to 12 inches
- 12 to 18 inches
- 18 to 24 inches
- 24 to 30 inches
- 30 to 36 inches
- Greater than 36 inches



Graphic Created
March 6th, 2018
4:36 PM EST

**Area of Greatest
Uncertainty Due To
Low Confidence in
the Rain/Snow Line**